



**4th Annual Fox River Summit
Celebrating Success and
Addressing Shared
Challenges**

Fox River Ecosystem Partnership



Fox River Ecosystem Partnership

- FREP was established in 1996
- FREP's territory is the entire Fox River watershed in Illinois
- At the time was one of 41 ecosystem partnerships in the state under the auspices of the IDNR— now only 2 or 3 remaining!
- Served historically as a conduit for State and Federal grants





Fox River Watershed Facts In Illinois

- 1,720 square miles
- 130 miles in length
- 9 counties
- Over 90 communities
- Over 400 lakes





Fox River Ecosystem Partnership – Celebrating 20 Years

Overall Vision and Goal of FREP

As set forth back in 1996.

Our Vision for the Fox River watershed in Illinois is to balance all the uses and demands on our natural resources while preserving and enhancing a healthy environment.

Our Goal is to promote, preserve, protect and enhance the natural, cultural, economic and recreational resources of the Illinois Fox River and its watershed.



What is FREP?

- Not-for-profit group
- Funding is mostly membership based and some grant funding
- All are welcome: individuals, businesses, organizations, government entities, HOA, consultants
- One paid Communications Manager
- Executive Committee oversees activities
- Integrated Management Plan



Factors Impacting the Fox River Watershed

- Population Growth and Development
- Regulated Discharges
 - 160 NPDES permits
 - 55 WWTP on Fox and Tributaries in IL
- Water Supply
 - Over 300,000 people drink from Fox River
- Dams
 - 13 on Fox River in IL, 80+ on tributaries
- Wisconsin—what happens upstream





Integrated Management Plan - 1998

Collaborative, Inclusive Planning Process Established:

6 Major Areas of Concern Which Included:

Recreation, Habitat, Land Use, Water, Quality,
Stormwater, Education

Developed 16 Critical Factors which led to 37 Detailed
Recommendations for Action

Endorsed by many stakeholders





FREP Watershed Grants and Matches

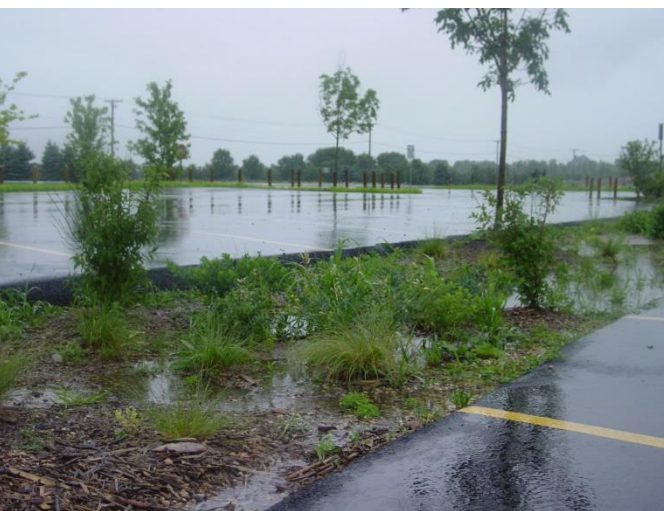
FREP instrumental in bringing \$\$ to the watershed

Old IDNR C2000 **\$2,333,250**

58 grants since 1996

EPA 319 Program **\$9,500,000**

47 NPS Pollution Control Grants since 1990



Hey and Associates, Inc.
Engineering, Ecology and Landscape Architecture

- Many Issues
- Changing Political Landscape
- Changing Funding
- But Many Accomplishments in 20 Years





Ongoing FREP Activities

- Bi-monthly FREP Noon Network programs featuring environmental projects throughout the watershed
- Bi-monthly membership meetings with program presentations
- Assisting CMAP with 9 lakes TMDL project
- Provided Watershed Planning assistance for subwatersheds
- Fox River Water Trail Initiative





Ongoing FREP Activities

- Represented on Fox River Study Group
 - Analagous to new Illinois Fox River Group in WI
- Screenings of the film DAMNATION
- Monthly *Downstream* e-newsletter
- Comprehensive website full of resources
 - Model ordinances, subwatershed plans, studies, activities and more

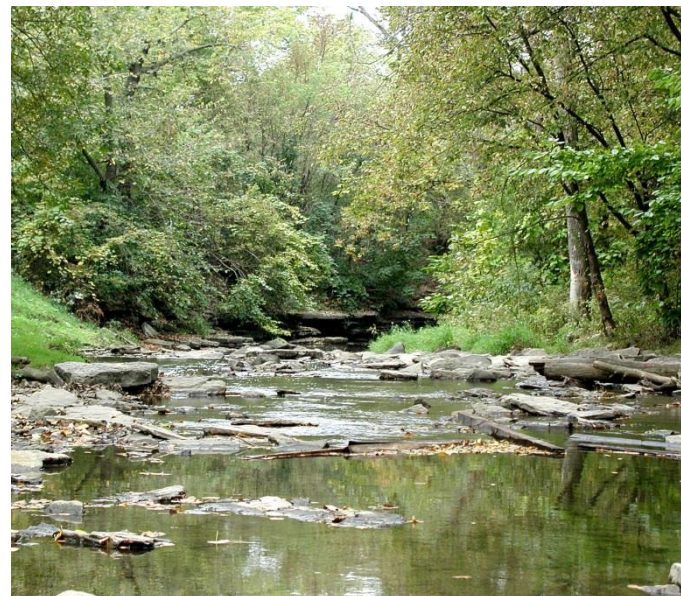




Subwatershed Planning Assistance

Subwatersheds with Completed Plans

9 Lakes Watershed
Blackberry Creek *
Ferson-Otter Creek *
Fish Lake Drain Watershed
Flint Creek Watershed *
Jelkes Creek
Nippersink Creek *
Poplar Creek Watershed
Sequoit Creek Watershed
Silver & Sleepy Hollow Creek *
Squaw Creek Watershed
Tyler Creek Watershed *



Watersheds Currently Involved in Watershed Planning

Boone-Dutch Creek Watershed
Spring Creek Watershed
Woods Creek Watershed



Today's Major Issues for FREP at 20 Years!!

- Re-inventing ourselves to:
 - Stay relevant
 - Continue to improve watershed
 - Find new funding sources
 - Find new ways to reach watershed stakeholders
- Proposed Whitewater Recreation Facility on the Fox River
 - What are the impacts, costs??
- Keeping Subwatersheds Engaged
- Helping Communities Find More Sustainability





Jeff Mengler, FREP President Jmengler@heyassoc.com

www.foxriverecosystem.org

And newly on Facebook 



Northeast Illinois Invasive Plant Partnership



- Born out of Chicago Wilderness
 - High priority for all resource managers
 - Needed help crossing borders
- Founded in 2010
- Wrote MOU and obtained 63 organizational signatories
- Hired a full-time coordinator
- Formed Steering Committee (act as Board)



- Secured 16 grants totalling \$572,930.60
- Special thanks to USFS for large support in early years via Midewin
- Distributed small grants to partners totalling \$26,045
- Housed at Chicago Botanic Garden





Prevention

Invasive Ornamental Plants
Education and Outreach
Goal – to reduce supply and demand!



- Workshops for Garden Clubs and Master Gardeners
- iLandscape Show and Chicago Flower & Garden Show
- Homeowner fact sheets (LCFPD)



Prevention

- Invasive Ornamental Symposium at Chicago Botanic Garden
- 84 attendees
- Connecting green industry and conservation





Prevention

Audubon Toyota TogetherGreen Fellowship

- Build long term relationships with Hispanic community
- Translate Midwest Invasive Plant Network's Landscape Alternatives brochure into Spanish
- Translate homeowner fact sheets into Spanish
- Host bilingual workshops and garlic mustard pulls



Prevention

Clean Boats Crew

- Chain O'Lakes and North Point Marina
- Diversey and Burnham Harbors
- Portage Public Marina and East Chicago Marina (IN)
- Total interactions: 3,519



Early Detection & Rapid Response

- IL Hydrilla Task Force
- New Invaders Watch Program



Early Detection & Rapid Response: IL Hydrilla Task Force

ILLINOIS' LEAST WANTED!

Hydrilla is a highly invasive aquatic plant that threatens the health of Illinois' lakes and rivers—as well as fishing, boating, and swimming. It's **very** easily confused with American elodea (a desirable native aquatic plant), as well as Brazilian elodea (another invasive aquatic plant). If you think you've seen **hydrilla** or **Brazilian elodea**, please take a picture and let us know right away—see the reverse side for contact information.

Hydrilla Hunt!
NIIPP.NET
Join the Search!

INVASIVE		NATIVE
		
<p>Michael J. Grobauer, U.S. Army Engineer Research and Development Center</p>	<p>Christian Fisher, www.commonswiki.org</p>	<p>Peter Skovlin, Aquatic Plants of the Upper Midwest</p>
<p>HYDRILLA <i>Hydrilla verticillata</i> INVASIVE</p> <p>a. whorls of more than 3 leaves b. leaves often have visibly toothed edge c. leaf vein often has small visible spines</p> 	<p>BRAZILIAN ELODEA <i>Egeria densa</i> INVASIVE</p> <p>a. whorls of more than 3 leaves b. leaves do not have visibly toothed edge c. leaf vein is smooth underneath</p> 	<p>AMERICAN ELODEA <i>Elodea canadensis</i> NATIVE</p> <p>a. whorls of exactly 3 leaves b. leaves do not have visibly toothed edge c. leaf vein is smooth underneath</p> 

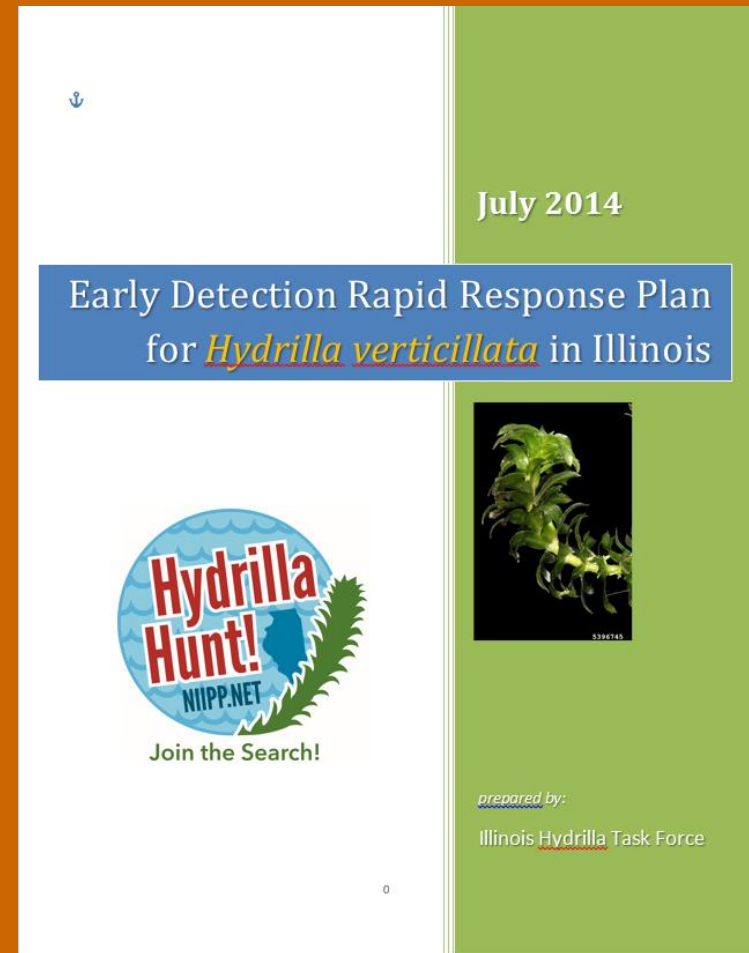
Illustrations: Center for Aquatic and Invasive Plants, University of Florida

- Education and outreach materials
- Website
- Email reporting site
- Assessment and response protocols



Early Detection & Rapid Response: IL Hydrilla Task Force

- EDDR Plan Document
- Fact sheets for an additional 12 aquatic invasive plant species
- Memorandum of Understanding for Rapid Response Team



Early Detection & Rapid Response: New Invaders Watch Program

- Updated database for prioritizing control efforts
- Updated target list
- “Strike Team” in action
- Recruiting additional monitors



Chicagoland “Strike Team”



Coordinating Control and Management

- Japanese knotweed and stiltgrass in Downers Grove
- Wild chervil in Kane County



Partner control efforts

- DuPage County Forest Preserve District = 2,126 acres
- Fermilab Natural Areas = 1,500 acres



Illinois Invasive Plant Council

- NIIPP Conservation representative
- Provided risk assessment for various species – some of which will likely be added to Exotic Weed Act
- Help to promote alternatives to species that are not currently up for regulation



Garlic Mustard Challenge

5. DeKalb County FPD
(150 lbs)
4. GreenCorps (630 lbs)
3. Fermilab (650 lbs)
2. FPCC (1,330 lbs)
1. Lake Forest Open
Lands Association
(1,440 lbs)



D. Maurer



Summary 2010-2015

- Workshops, presentations, exhibit tables:
 - 167 reaching > 7,500 people
- Clean Boats Crew: almost 9000 exposures
- IL Hydrilla Hunt!: > 5,890 cards, 40 posters, 390 ID sheets; 9 negative reports
- Published articles, interviews, etc.: 110 with potential to reach more than 1 million people
- Control efforts by partners (yearly): > 5,000 acres

Putting it all in perspective



2010 - 2011

Goals:

- name for organization
- developing a logo
- setting up website
- submit applications to appropriate sources of funding
- developing an identity as an organization



Putting it all in perspective

2014

- Now involved in State prevention and EDRR efforts
Participating in State regulatory efforts
- Consistently on radar screen for federal funding
- Working consistently with green industry
- Working with target audiences we hadn't anticipated – faith-based organizations and Hispanic community
- And the list goes on....



Illinois Hydrilla Task Force



2016 Perspective

- Full-time Coordinator Departed NIIPP (personal reasons)
- Lost Fiscal Sponsor and Host
- Finishing out Existing Grants with part-time personnel
- Seeking new host and fiscal sponsor
 - Many organizations interested, but unwilling to take it on.
- Searching to find Sustainability for NIIPP



NIIPP Steering Committee:

Debbie Maurer, Lake County Forest Preserve District, Chair

Jeff Mengler, Hey and Associates, Inc., Vice Chair

Trish Beckjord, Midwest Groundcovers

John Legge, The Nature Conservancy

Cindy Hedges, DuPage County Forest Preserve District

Delane Strohmeyer, Midewin National Tallgrass Prairie

Patrice Charlebois, IL-IN SeaGrant



www.NIIPP.net



- Stay Relevant and Impactful
- Find New Funding Sources
- Organizationally Sustainable
- New Ways to Get Message to Stakeholders
- Continue Collaborative Work Across Borders
- Reinvent Ourselves!!





NORTHEAST ILLINOIS INVASIVE PLANT PARTNERSHIP
A COOPERATIVE WEED MANAGEMENT AREA



Hey and Associates, Inc.

Engineering, Ecology and Landscape Architecture