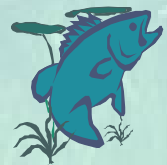


State of the Fish: Recent Fox River Fisheries Monitoring and Plans for the Future



Fox River Summit
Friday, March 10th, 2017



Southeastern Wisconsin

- Close proximity to several large metropolitan areas
- Multitude of high quality fishing resources
- High number of local and visiting anglers
- Competing priorities (recreation, development, etc.)



Fox River – Racine and Kenosha Counties

- 21 river miles in Racine County
- 12 river miles in Kenosha County
- Connected wetlands, backwaters, bays, lakes
- Large warmwater to small coldwater inputs
- Two active dams
- Various large-scale disruptions
- Fish monitoring and stocking



Fox River Fish Community

- Nutrient-rich system
- Wide variety of habitat conditions
- 30+ fish species in recent surveys
- Strong forage base of non-game species
- Important top predator species
- Several imperiled fish species



Fox River Fishing Opportunities

- Strong support of stakeholder groups and municipalities
- Multitude of public access points
- Free-flowing river, lakes and impoundments
- Popular gamefish throughout
- Significant seasonal migratory runs



Fox River Fisheries Monitoring

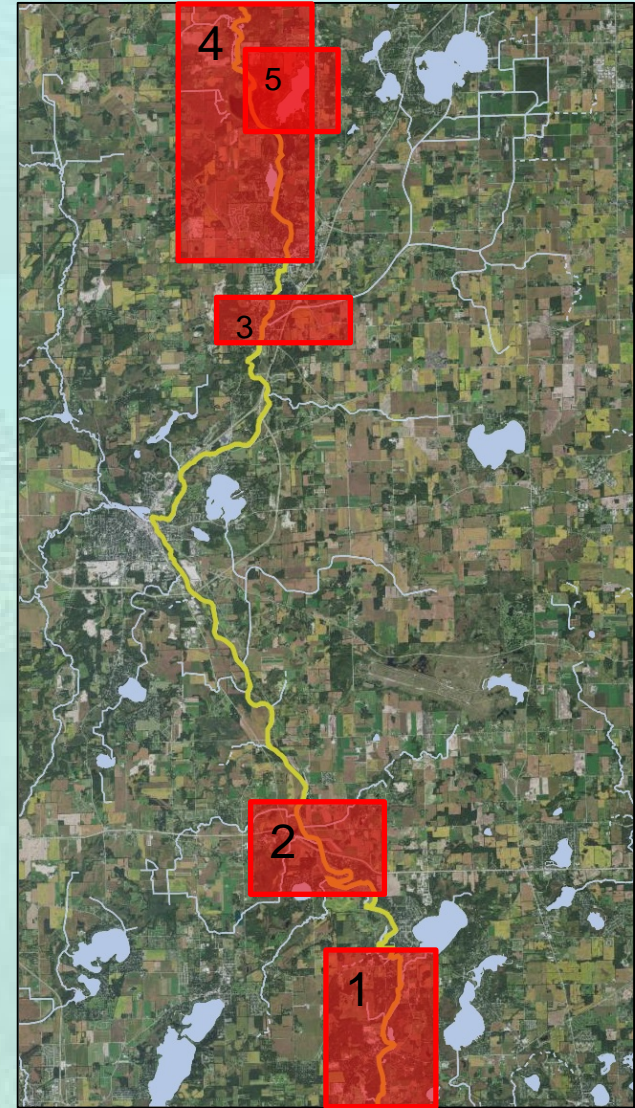
- Annual electrofishing surveys in Racine and Kenosha Counties
- Specialized catfish netting
- Annual fall walleye electrofishing in Tichigan Lake
- Ongoing Tichigan Lake comprehensive fisheries survey
- Special surveys as necessary





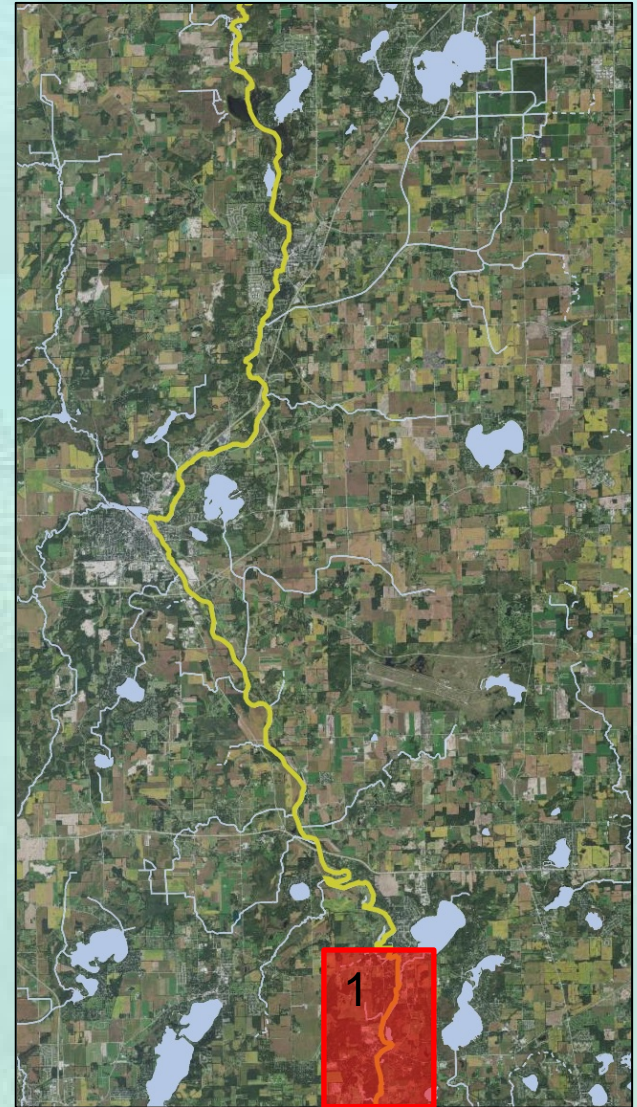
Fox River Fisheries Monitoring

1. County Highway F to state line
2. State Highway 50
3. Rochester impoundment
4. County line to Waterford Dam
5. Tichigan Lake



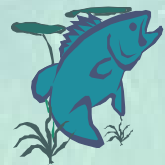
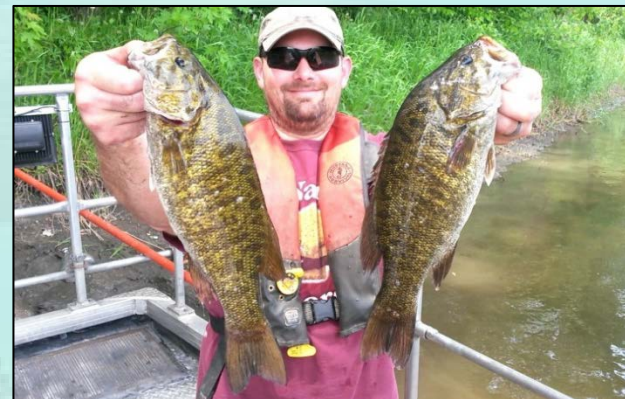
Fox River Fisheries Monitoring

1. County Highway F to state line
2. State Highway 50
3. Rochester impoundment
4. County line to Waterford Dam
5. Tichigan Lake



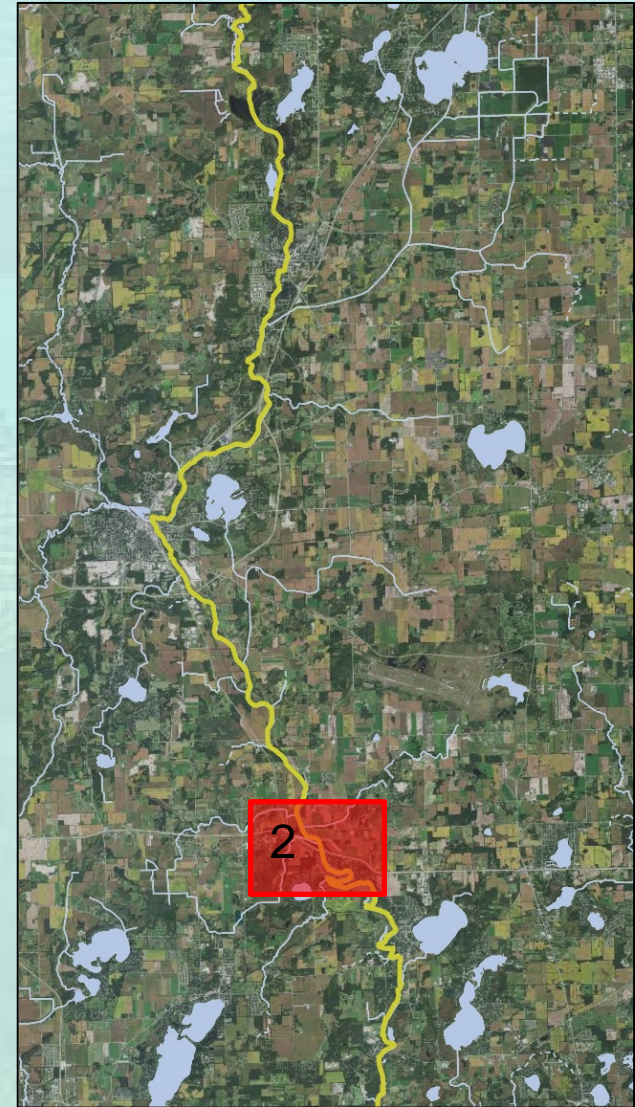
Fox River Fisheries Monitoring

1. County Highway F to state line
 - Highest river gamefish catch rates
 - Abundant SMB, WAE, catfish
 - Rough fish forage base
 - Abundant redhorse
 - Good IBI scores
 - Good public access points



Fox River Fisheries Monitoring

1. County Highway F to state line
2. State Highway 50
3. Rochester impoundment
4. County line to Waterford Dam
5. Tichigan Lake



Fox River Fisheries Monitoring

2. State Highway 50

- High gamefish catch rates
- Abundant SMB, WAE, catfish
- Rough fish/panfish forage base
- Abundant redhorse
- Fair IBI scores
- Limited public access points



Fox River Fisheries Monitoring

1. County Highway F to state line
2. State Highway 50
3. Rochester impoundment
4. County line to Waterford Dam
5. Tichigan Lake



Fox River Fisheries Monitoring

- 3. Rochester impoundment & WLC
 - Lower gamefish catch rates
 - SMB, WAE, NOP, catfish
 - Panfish/rough fish forage base
 - Abundant redhorse
 - Fair IBI scores
 - Good public access points



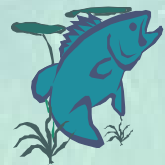
Fox River Fisheries Monitoring

1. County Highway F to state line
2. State Highway 50
3. Rochester impoundment
4. County line to Waterford Dam
5. Tichigan Lake



Fox River Fisheries Monitoring

- 4. County line to Waterford Dam
 - Moderate gamefish catch rates
 - LMB, catfish, WAE, NOP
 - Panfish/rough fish forage base
 - Abundant redhorse
 - Fair IBI scores
 - Good public access points



Fox River Fisheries Monitoring

1. County Highway F to state line
2. State Highway 50
3. Rochester impoundment
4. County line to Waterford Dam
5. Tichigan Lake



Fox River Fisheries Monitoring

5. Tichigan Lake

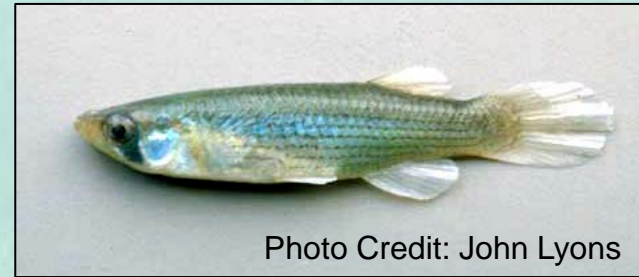
- Excellent gamefish and panfish catch rates and size structure
- LMB, catfish, WAE, NOP
- Panfish/rough fish forage base
- Abundant redhorse
- Limited public access points





Fox River Upcoming Challenges

- Ongoing winter drawdowns at Rochester Dam
- Possible upcoming winter drawdown at Waterford Dam
- Possible upcoming dredging above Waterford Dam
- Resident species
- Spawning migrations
- Imperiled species



Fox River Upcoming Opportunities

- Wisconsin Walleye Initiative stocking and regulation change
- Musky stocking partnership with clubs and counties
- Dedication to access assessment and development
- National Water Trail designation
- Ongoing fisheries monitoring and fish stocking

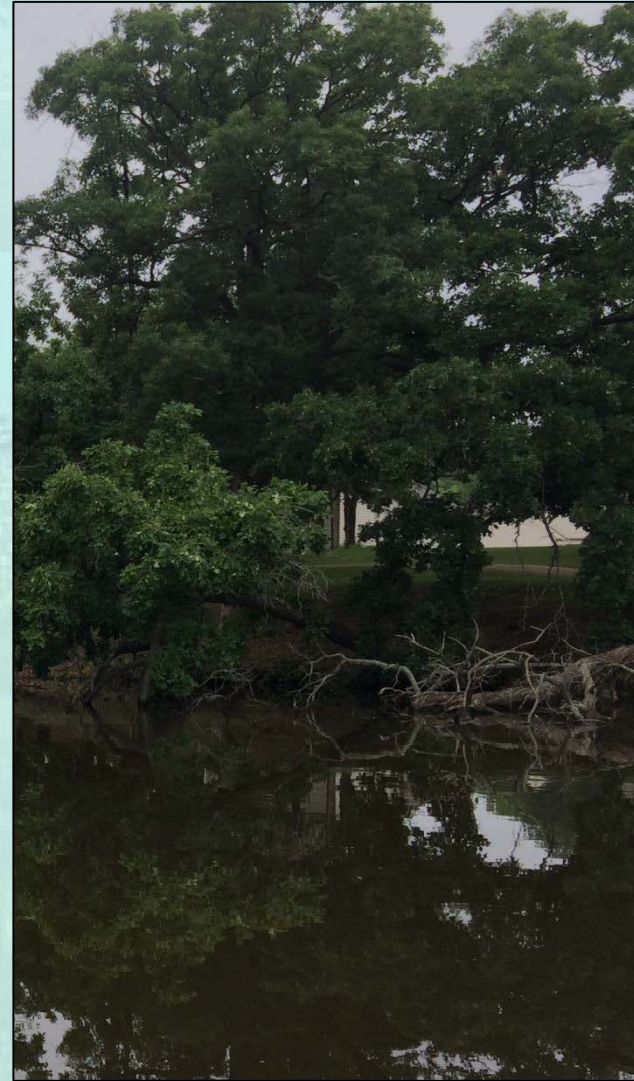


Photo Credit: Kenosha News



Fox River Fisheries Summary

- Good to great fishing opportunities throughout
- Variety of access points for boats and shorefishing
- Strong network of dedicated stakeholder groups
- Large-scale challenges upcoming
- Dedication to maintaining and improving Fox River fisheries





QUESTIONS?